



# THE TRANSHUMANCE IN SPAIN

White Book

RED RURAL ..... NACIONAL



**ANTECEDENT**

**WHITE BOOK ON TRANSHUMANCE**

*Goals*

*Participation Process*

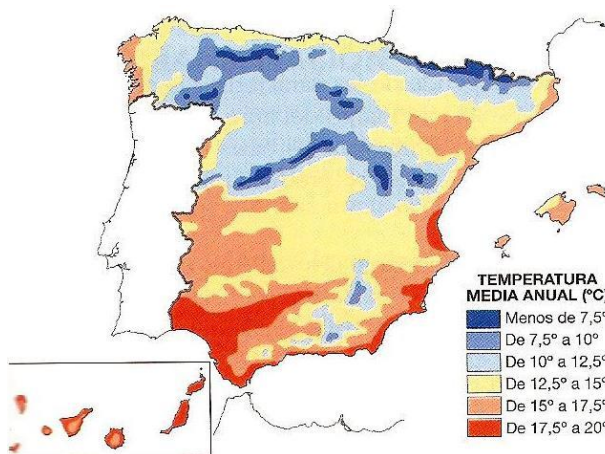
*Contents*

*Axes and Measures*

RED RURAL ..... NACIONAL

# THE TRANSHUMANCE IN SPAIN

# White Book



DURAN NACIONAL



# THE TRANSHUMANCE IN SPAIN

# White Book



INSTITUTO NACIONAL





# THE TRANSHUMANCE IN SPAIN

White Book



GENERAL  
DIRECCION NACIONAL



# THE TRANSHUMANCE IN SPAIN

White Book



... RURAL ... NACIONAL



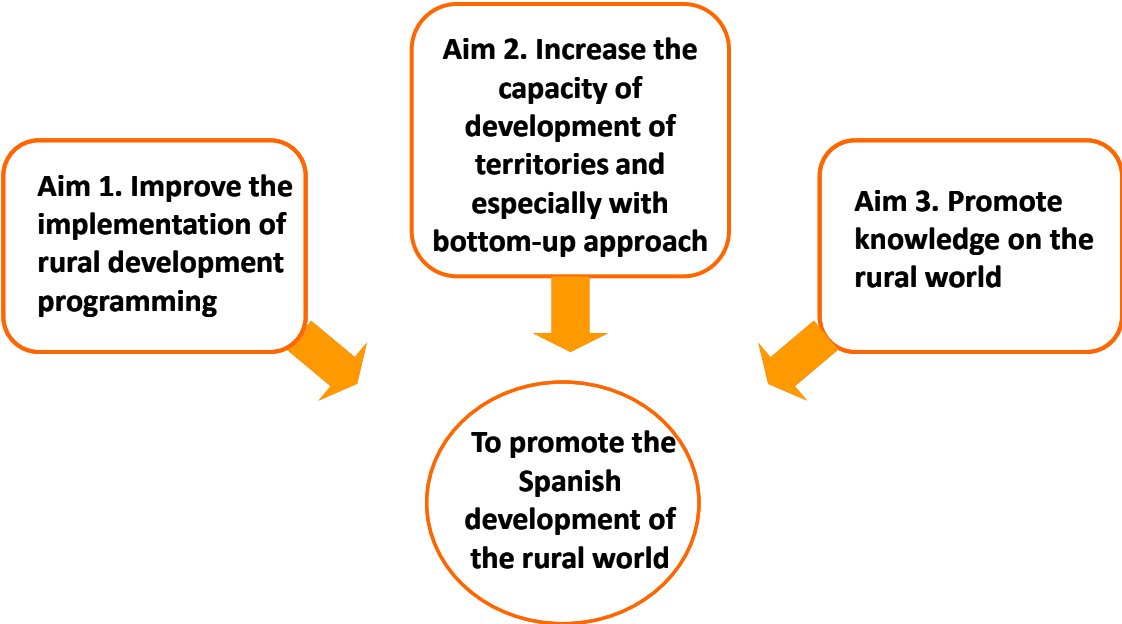






# THE NATIONAL RURAL NETWORK

The **National Rural Network** is an integrated system designed to strengthen alliances, disseminate experiences and form a common scenario with all stakeholders in the sustainable development of the Spanish rural area.



RED RURAL NACIONAL



## *Transhumance and extensive livestock farming Working Group*

<p><b>House of representatives of the Ministry of Agriculture, Food and Environment</b></p>	<ul style="list-style-type: none"><li>❖ General Direction of Rural Development and Forestry Policy</li><li>❖ General Direction of Quality, Environmental Assessment and Natural Environment</li><li>❖ General Direction of Health of Agricultural Production</li><li>❖ General Direction of Agricultural Production and Markets</li></ul>
<p><b>House of representatives of Autonomous Communities of Spain</b></p>	<ul style="list-style-type: none"><li>❖ Government of Navarra</li><li>❖ Government of Extremadura</li><li>❖ Autonomous Community of Baleares</li><li>❖ Autonomous Community of Madrid</li><li>❖ Government of Asturias</li></ul>



## *Transhumance Working Group and Ranching*

### Organizations

- ❖ UPA (Union of Small Farmers and Ranchers) and UPA\_Avila;
- ❖ Foundation Felix Rodriguez de la Fuente;
- ❖ Transhumance and Nature Association
- ❖ Spanish Association of de Avileña-Negra Iberica breed
- ❖ National Federation of Pastors
- ❖ Ranchers's Association of San Mames
- ❖ Foundation Santa María la Real
- ❖ Spanish Federation of Indigenous Breeds
- ❖ Association of transhumance and extensive ranchers of Asturias
- ❖ Quebrantahuesos Foundation
- ❖ Transhumance VIVA
- ❖ Spanish Network for Rural Development



## Goals

*To ensure the maintenance and recovery of migratory activity in serious risk of disappearing or being relegated to a marginal activity.*



### *Diagnosis of the current situation of transhumance*

- ❖ To channel a growing demand of the transhumance sector and the society in general.
- ❖ To collect the different views of the sector, the scientific community, the administration and the rural population in relation to transhumance.
- ❖ To perform an updated analysis of the situation of the sector on the basis of the information available until the date.
- ❖ To assess the alternatives from the various administrative units involved, trying to coordinate the work of the Ministry of Agriculture, Food and Environment.
- ❖ To prioritize the actions to be carried out in order to their impact on the sector and their contribution to reversing unfavorable situations identified in the diagnostic phase.





## Participation Process

*Participation Process: it involves various actions addressed to inform and consult the different stakeholders involved in the transhumance activity*

*Organized through various **forums and workshops***

- ❖ Transhumance and extensive livestock farming Working Group
- ❖ Participatory Day on the White Book (San Fernando de Henares, October 19, 2011).  
Wide set of proposals and priorities  
Assistance great representation of transhumance pastors.
- ❖ Expert panel. Major academic and research teams working in the study, maintenance and recovery of transhumance.

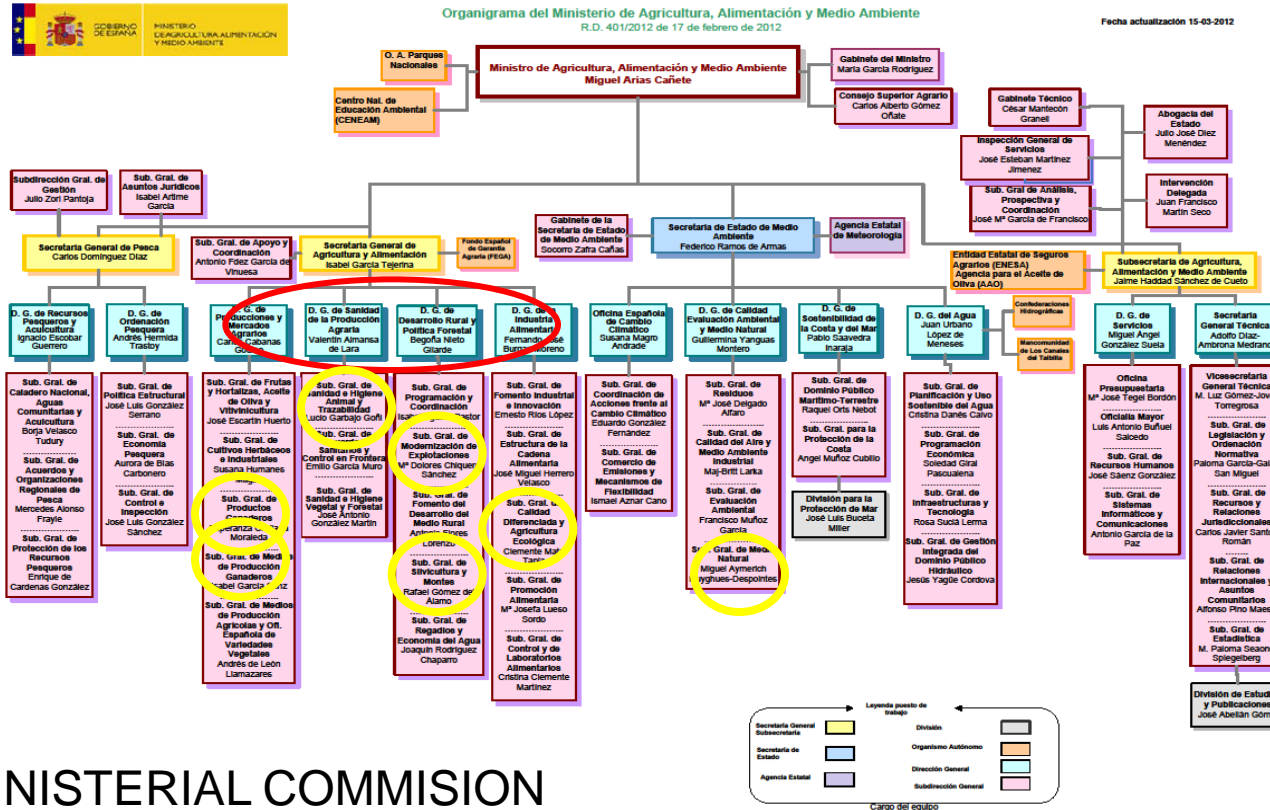
**Shared aims and goal** to establish the necessary measures to safeguard the current transhumance remnants.



# THE TRANSHUMANCE IN SPAIN

# White Book

## Participation Process

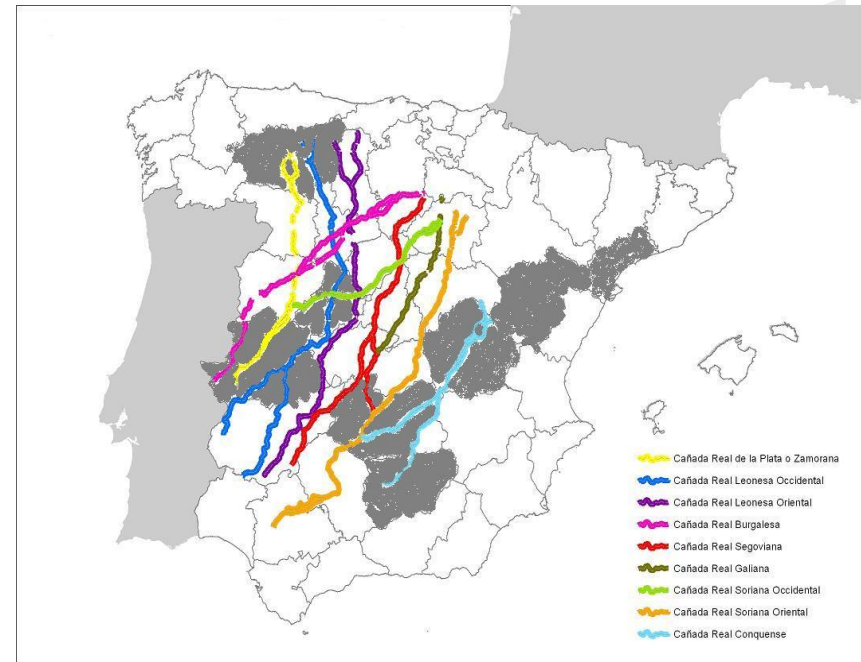


## INTERMINISTERIAL COMMISSION



## Participatory Day

- ❖ Federation of Extensive Farmers and Herds of Castilla y León (León, Burgos, Ávila y Zamora)
- ❖ Transhumants of Leon (León-Extremadura)
- ❖ Transhumants of Teruel (Albarracín- Jaén)
- ❖ Transhumants of Jaén (Pontoneros)
- ❖ Transhumants of Cuenca (Cuenca-Ciudad Real (Alcudia))
- ❖ Transhumants of Avila (Vaqueros de Gredos – Extremadura)





## *Participatory Day*

The AIMS of the journey were:

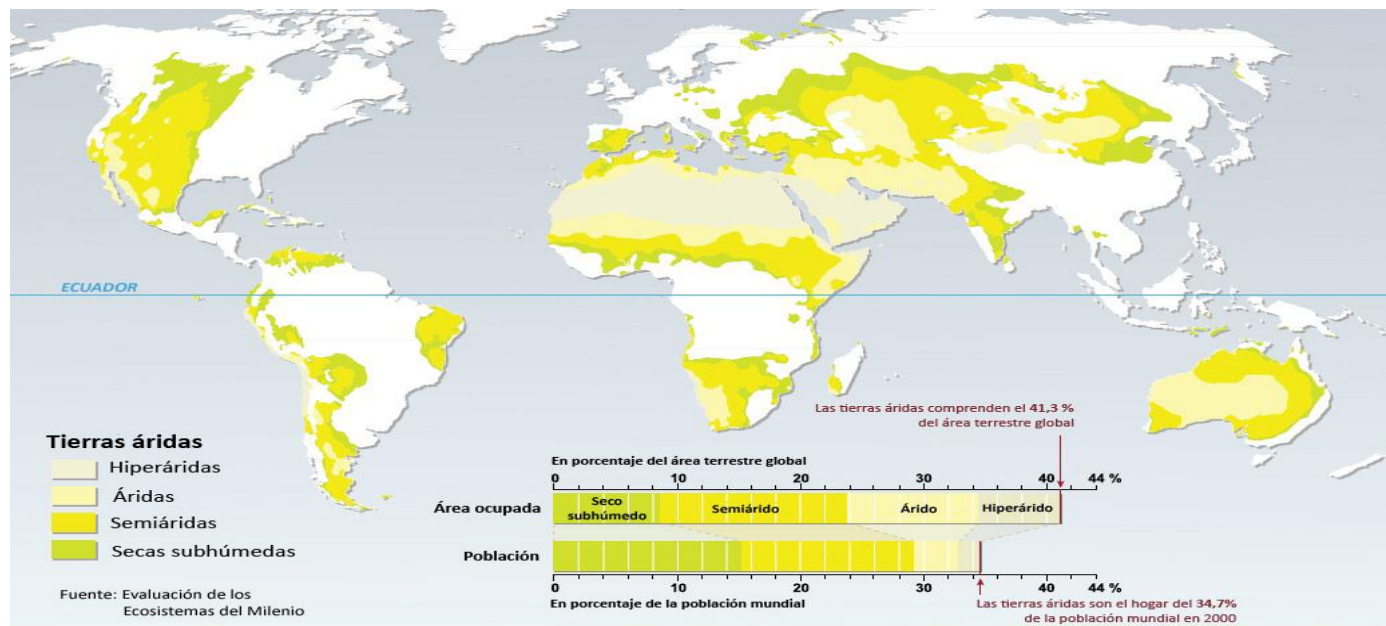
- ❖ To inform on the development of the White Book of the Transhumance in Spain
- ❖ To gather contributions and information from the participants
- ❖ To open a debate on possible topics to include in the White Book



## Contents

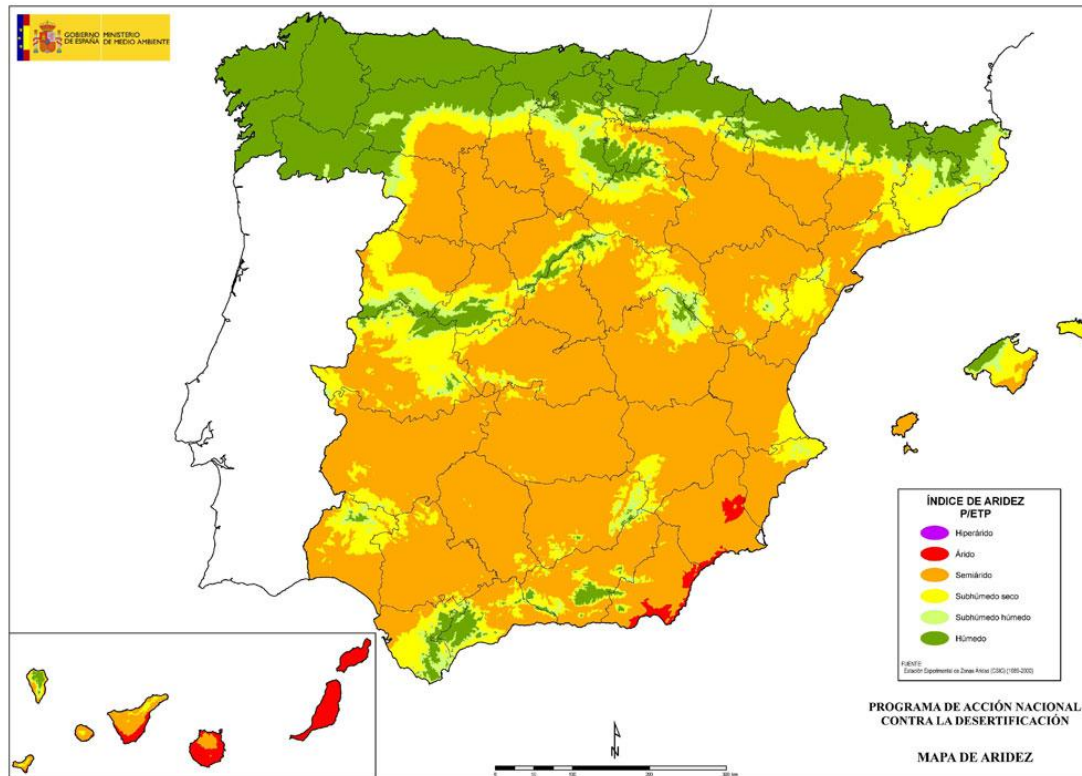
### 2. INTERNATIONAL DIMENSION OF THE DE LA TRANSHUMANCE

The mobile pasturage, represented in Spain by transhumance, is not a local phenomenon, but is practically anywhere in the world.



## Contents

### 2. INTERNATIONAL DIMENSION OF THE TRANSHUMANCE





## 3. THE TRANSHUMANCE IN HISTORY

Becoming activity from prehistory to the current day. Rise and fall of the activity, crisis of the traditional systems and disarticulation of the cattle trails.

## 4. THE TRANSHUMANT LIVESTOCK

Transhumance contribution to genetic improvement of livestock breeds, adapted to the environment and generating high quality products.



## 4. TRANSHUMANT FARMING

Sharp decline in staff for the transhumant sheep and goat flocks, facing a substantial increase in cattle

TRANSHUMANT CATTLE	TOTAL (2010)	ON FOOT
INSIDE THE AUTONOMOUS COMMUNITIES	182.000	43,26%
BETWEEN AUTONOMOUS COMMUNITIES	30 A 45.000	10,22 %

TRANSHUMANT SHEEP AND GOAT	TOTAL (2010)	ON FOOT
INSIDE THE AUTONOMOUS COMMUNITIES	224.000	43,06%
BETWEEN AUTONOMOUS COMMUNITIES	50.000	9,63 %

## 5. TRASHUMANT TERRITORIES

More than a half of the Spanish territory is occupied by areas suitable for livestock use, usable almost exclusively composed by rustic ranching.

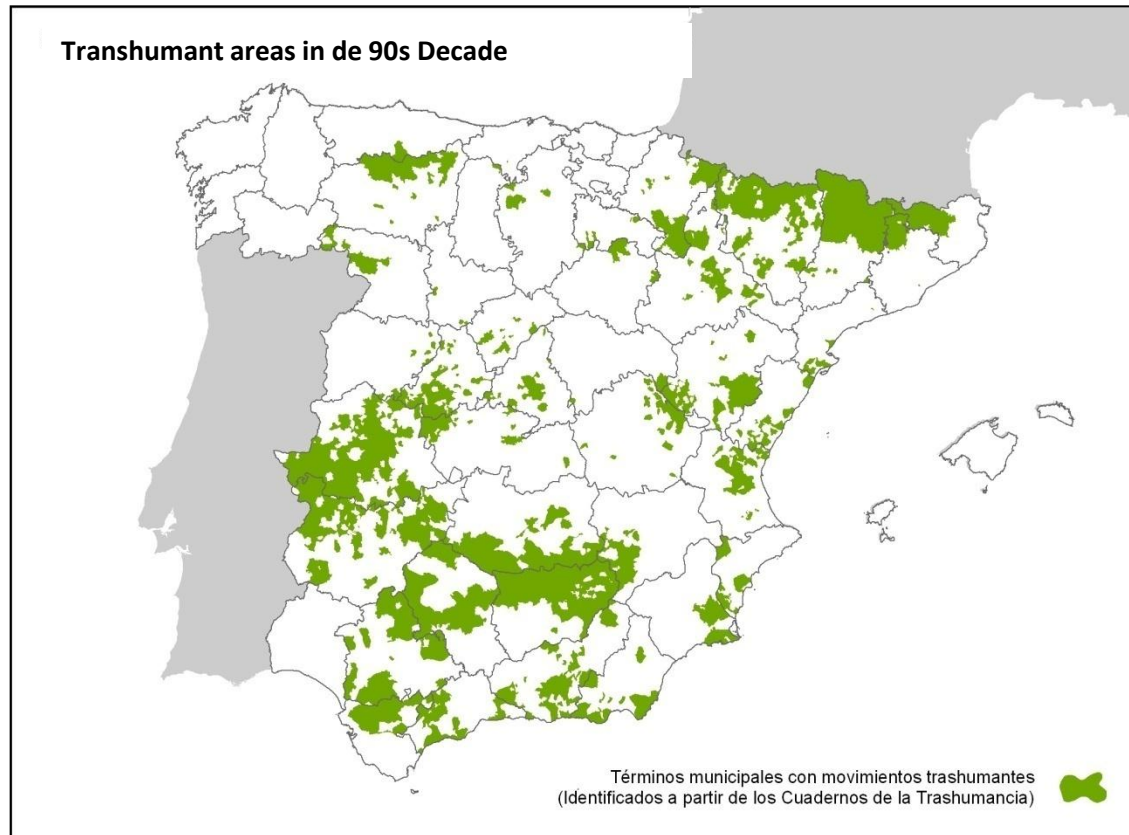


INSTITUTO NACIONAL DE ESTADÍSTICA



## 5. TRASHUMANT TERRITORIES

Rangeland and greenhouses are the complementary territories associated with transhumant livestock movements, in addition to the stubble and fallow agricultural land.



PASTORALISMO NACIONAL

## 5. TRASHUMANT TERRITORIES

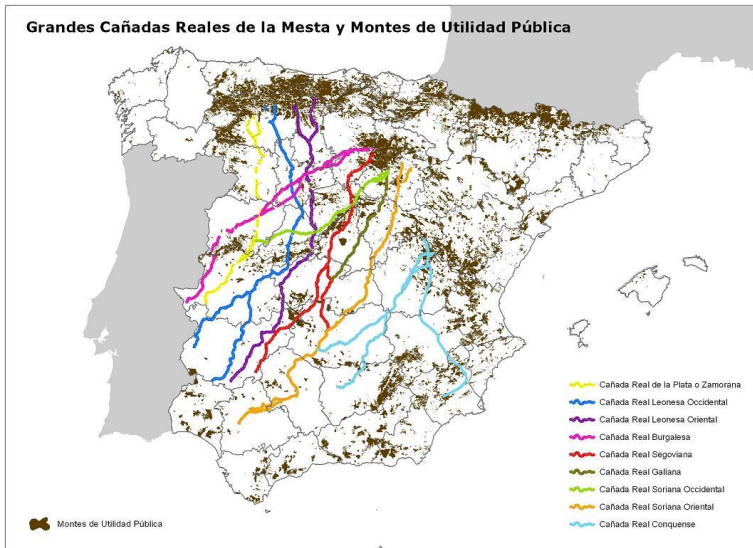
SUMMER PASTURES “agostadero”	WINTER PASTURES “invernadero”
<ul style="list-style-type: none"> <li>❖ Predominance of public ownership</li> <li>❖ Difficult access to parched pastures (award procedure)</li> <li>❖ Competition/conflict with shelf livestock / hunting / agriculture</li> <li>❖ Lack of infrastructure</li> </ul>	<ul style="list-style-type: none"> <li>❖ Predominance of private ownership</li> <li>❖ Legal uncertainty due to the lack of contracts</li> <li>❖ Higher prices for competition in land use (hunting, etc.).</li> <li>❖ Health risk from contact with wildlife and / or hunting.</li> <li>❖ Lack of infrastructure.</li> </ul>



RURAL ... NACIONAL  
 D ...

## 5. TRASHUMANT TERRITORIES

Big ROYAL DROVE ROADS of La Mesta and Forest Public Use





## 6. MOVEMENT OF LIVESTOCK : DROVE ROADS





## 6. MOVEMENT OF LIVESTOCK : CATTLE TRAILS

### General Network of Drove Roads



RURAL... NACIONAL

## 6. MOVEMENT OF LIVESTOCK : CATTLE TRAILS

### General Network of Drove Roads



RURAL... NACIONAL



## 6. MOVEMENT OF LIVESTOCK : DROVE ROADS

General Network of Drove Roads : cultural-historical



## 6. MOVEMENT OF LIVESTOCK : DROVE ROADS

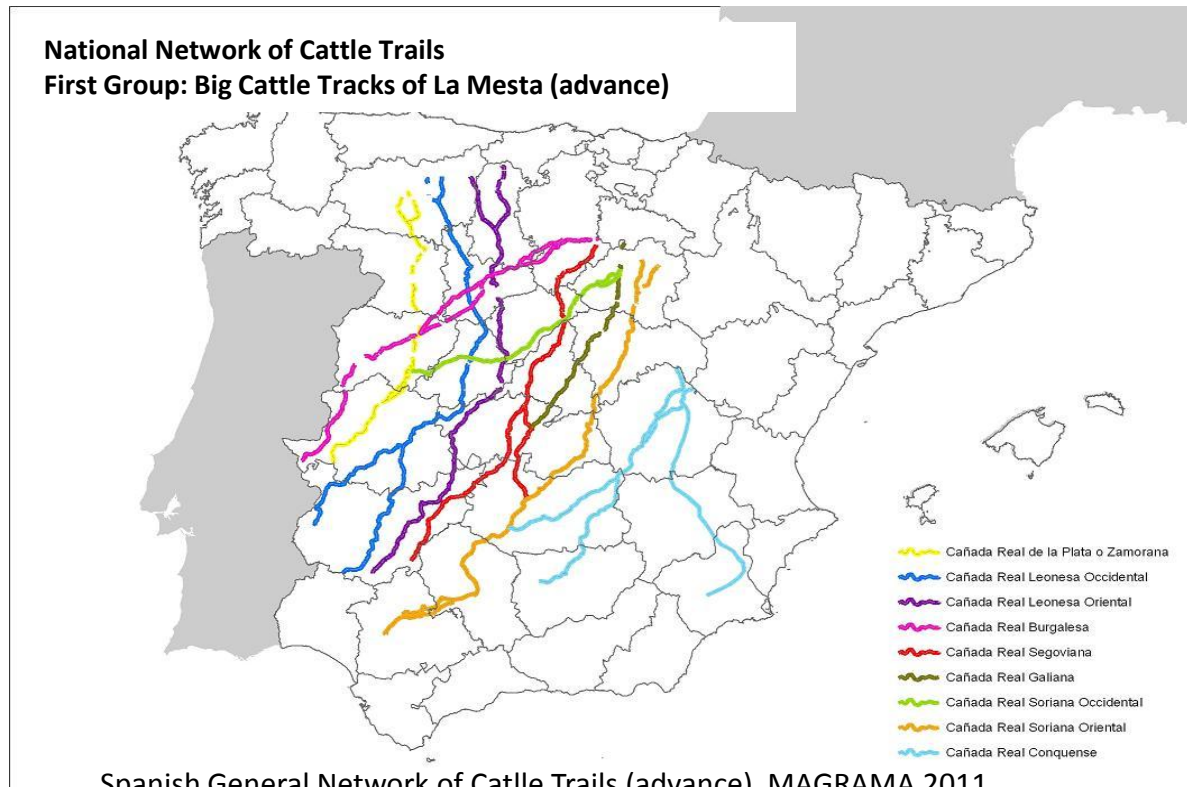
General Network of Drove Roads : tourist-recreational





## 6. MOVEMENT OF LIVESTOCK : DROVE ROADS

Law 3/1995 on Drove Roads



... NACIONAL

# THE TRANSHUMANCE IN SPAIN

# White Book

## Drove Roads Conditions

- ❖ Intrusism: agricultural character, no respect for the “two-field system”, etc.
- ❖ Urban invasion and occupation.
- ❖ Obstacles and Hazards: Infrastructure, dumping sites...
- ❖ Difficult of access to water
- ❖ Pasture deterioration
- ❖ Lack of infraestructure for shepherd and livestock

## National Network Restoration Program



NACIONAL

## 6. MOVEMENT OF LIVESTOCK : DROVE ROADS



... NACIONAL  
D R A L  
U R A L

## 7. SOCIO-ECONOMIC OF TRANSHUMANCE

❖ Transhumant population: effective, location and dual residence

MOVEMENTS	Sheep_Goat Farms Owners	Beef Farms Owners
INSIDE THE AUTONOMOUS COMMUNITIES	85	1.159
BETWEEN THE AUTONOMOUS COMMUNITIES	1.205	5.944

❖ New generation

❖ Role of women

❖ Economic analysis

❖ Associations and cooperatives

RA... NACIONAL  
D...  
R...



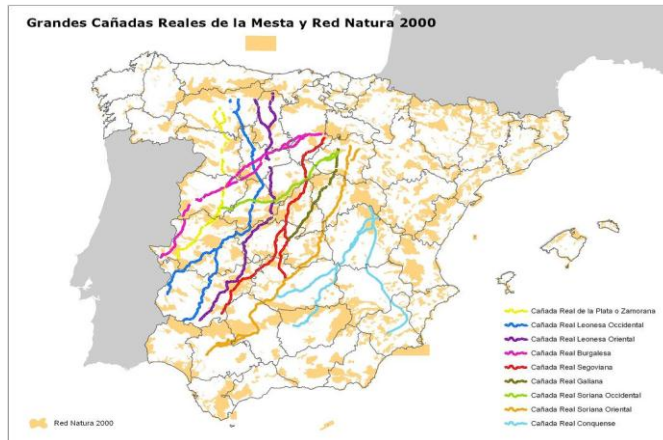
## 7. SOCIO-ECONOMIC OF TRANSHUMANCE



URRAL  
..... NACIONAL

## 8. ENVIRONMENTAL AND CULTURAL SERVICES OF TRANSHUMANCE: ECOSYSTEM SERVICES

### Regulating services



- ❖ Connectivity
- ❖ Conservation of indigenous breeds
- ❖ Fire prevention
- ❖ Erosion control and soil fertilization
- ❖ Exploitation of marginal lands (desertification)
- ❖ Climate change mitigation



## 8. ENVIRONMENTAL AND CULTURAL SERVICES OF TRANSHUMANCE: ECOSYSTEM SERVICES

Regulating services





## 8. ENVIRONMENTAL AND CULTURAL SERVICES OF TRANSHUMANCE: ECOSYSTEM SERVICES

### Regulating Services





## 8. ENVIRONMENTAL AND CULTURAL SERVICES OF TRANSHUMANCE: ECOSYSTEM SERVICES

### Transhumance and Ecosystem Services:

#### Supplying Services:

- ❖ Meat, milk, leather, wool, manure
- ❖ Fixation of population
- ❖ Efficiency and quality

#### Culturals Services:

- ❖ Historical and artistic heritage. Ethnographic
- ❖ Tourism. BIC. UNESCO
- ❖ Traditional ecological knowledge



### Services valuation:

- ❖ Limitations and possibilities (PSA)

## 8. ENVIRONMENTAL AND CULTURAL SERVICES OF TRANSHUMANCE: ECOSYSTEM SERVICES



*Pastoralist art*



*Shearing house*

## *Axes and Measures*

### *Axis 1. Regulatory and Institutional Framework Development*

Regulatory developments relating to the consolidation of the cattle trail network and yhe health regulations. To create the sectoral transhumance table.

### *Axis 2. Improving knowledge for management*

Improving knowledge for management: transhumant livestock record. Precise determination of the current areas of transhumance and their biogeographic characteristics, planning and regulations.

### *Axis 3. Social and economic integration*

The lack of labour and the socio-economic integration of the activity and its leaders: professional qualification, financial support under the Rural Development Programs, access to grants, suport to infrastructure and modernization. Recognition and compensation of the environmental services through territorial farming contracts.

### *Axis 4. Livestock routes infrastructure*

Conservation of road infrastructure associated with the transhumant activity through the development, in the current line of work, under the Cattle Trails Recovery Program and the consequent determination and official publication of the National Network of Cattle Trails.

## *Axes and Measures*

### *Axis 5. Livestock and animal health*

Simplify procedures and formalities under the framework of health guarantee.

### *Axis 6. Enhancement of transhumance*

Promotion of innovative projects, development of informative campaigns aimed at various groups and colectivos and volunteer programs specifically related to transhumance.

### *Axis 7. International projection*

To promote the statement of the National Network of Cattle Trails as European Natural and Cultural Itineraries and as World Heritage and the incorporation of transhumance and mobile pasturage as a strategic line of the Spanish International Cooperation.





## *The future: Iberian Association of pastoralists*



... RURAL NACIONAL



# THE TRANSHUMANCE IN SPAIN

White Book

Thank you very much!



[http://www.magrama.gob.es/es/desarrollo-rural/temas/red-rural-nacional/libro\\_blanco\\_de\\_la\\_trashumancia\\_tcm7-200487.pdf](http://www.magrama.gob.es/es/desarrollo-rural/temas/red-rural-nacional/libro_blanco_de_la_trashumancia_tcm7-200487.pdf)

Rcasas@magrama.es



RED RURAL NACIONAL